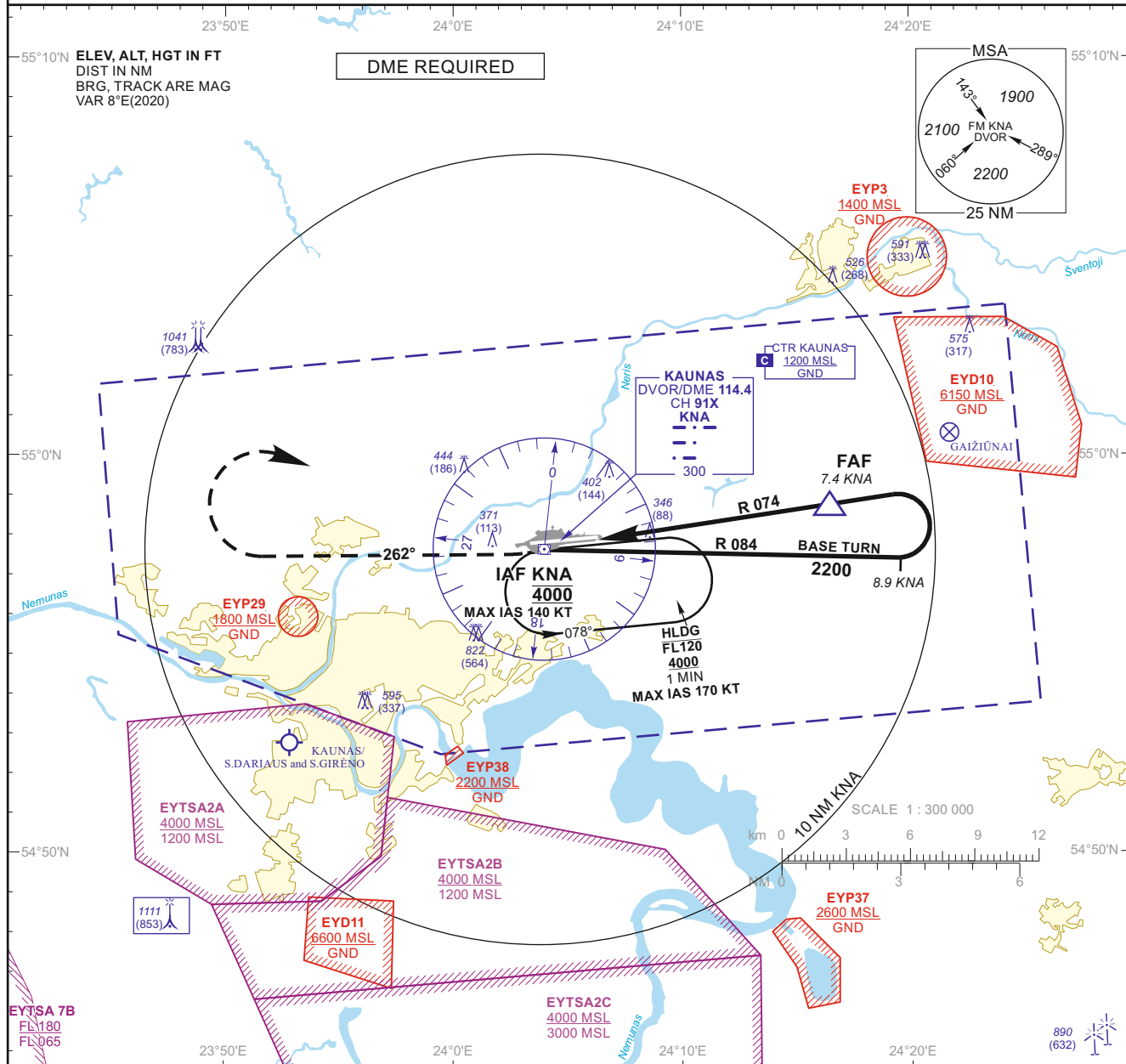


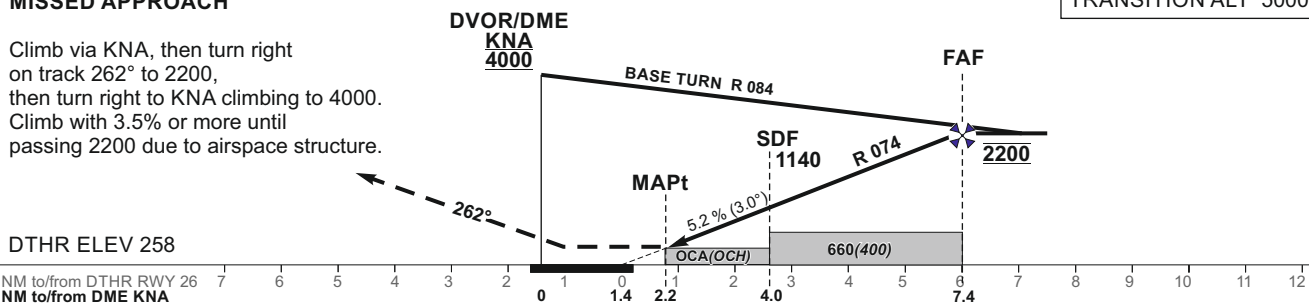
TWR	124.205
	118.505
ATIS	129.055

**KAUNAS
VOR Z RWY 26
(CAT A/B)**



TRANSITION ALT	5000
----------------	------

Climb via KNA, then turn right on track 262° to 2200, then turn right to KNA climbing to 4000. Climb with 3.5% or more until passing 2200 due to airspace structure.



OCA(OCH)		A	B	DIST DME KNA	7	6	5	4	3		
STRAIGHT-IN APPROACH	VOR	630 (370)		Altitude	2090	1770	1460	1140	830		
	VOR (when SDF not recieved)	660 (400)		Height	(1832)	(1512)	(1202)	(882)	(572)		
CIRCLING		710 (450)	760 (500)	Timing not authorized for defining the MAPt							
				GS	Kts	80	100	120	140	160	180
				FAF - MAPt 5.2 NM	min:sec	3:54	3:07	2:36	2:14	1:57	1:44
				Rate of descent (5.2%)	ft/min	415	520	625	730	835	940
				For data tabulation see verso							

INSTRUMENT
APPROACH
CHART - ICAO

AERODROME ELEV 259
HEIGHTS RELATED TO
DTHR RWY 26 - ELEV 258

TWR	124.205
	118.505
ATIS	129.055

KAUNAS
VOR Z RWY 26
(CAT A/B)

TABULAR DESCRIPTION

VOR INSTRUMENT APPROACH from IAF(KNA)

FIX/POINTS	COORDINATES	FIX FORMATION
KNA (IAF)	54 57 37.4N 024 03 59.1E	
FAF	54 58 45.8N 024 16 36.6E	BRG 253.47° / 7.37 NM KNA
SDF	54 58 14.8N 024 10 51.4E	BRG 253.47° / 4.00 NM KNA
MAPt	54 57 58.2N 024 07 47.7E	BRG 253.47° / 2.22 NM KNA
DTHR RWY 26	54 57 53.79N 024 06 19.46E	
Final approach descent angle: 3.00°		

Changes: new chart.